

Information

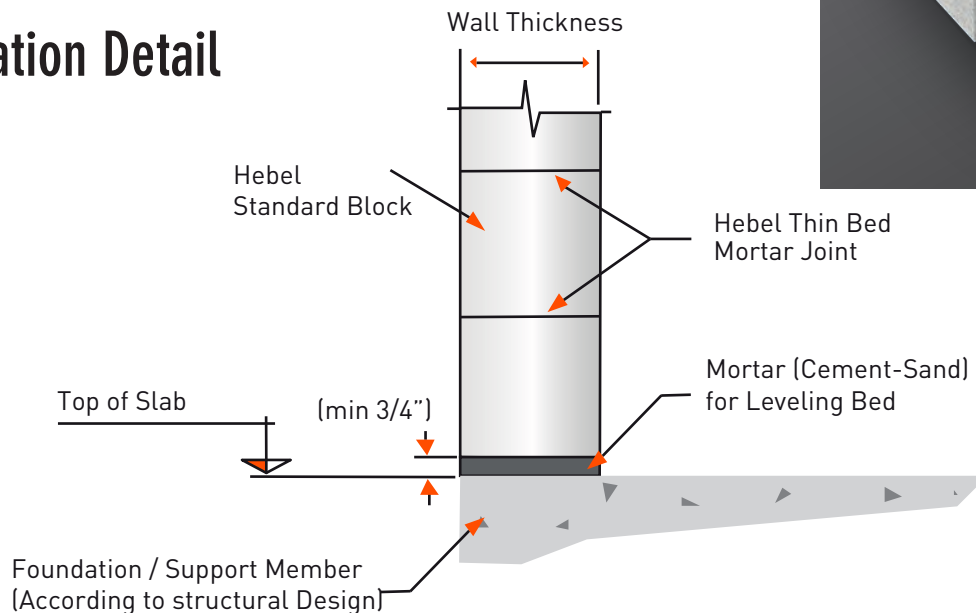
Thickness (in)			Design Weight ⁽²⁾				Pallet			Hebel Thin Bed Mortar ⁽³⁾	
cm*	in ⁽¹⁾	in*	AAC-4		AAC-6		piece	ft ²	ft ³	lb/ft ²	lb/ft ³
10	4	3.937	12.29	16.14	14.75	19.37	180	236.4	77.6	0.45	1.37
12.5	5	4.921	15.36	20.17	18.43	24.24	144	189.1	77.6	0.56	1.37
15	6	5.906	18.43	24.21	22.12	29.05	120	157.6	77.6	0.68	1.37
17.5	7	6.889	21.51	28.24	25.81	33.89	96	126.1	72.4	0.79	1.37
20	8	7.874	24.58	32.28	29.49	38.73	84	110.3	72.4	0.90	1.37
25	10	9.843	30.72	40.34	36.87	48.41	72	94.6	77.6	1.13	1.37
30	12	11.811	36.87	48.41	44.24	58.10	60	78.8	77.6	1.35	1.37

⁽¹⁾ Nominal dimension, ⁽²⁾ Values consider material's moisture content, ⁽³⁾ Average, *Exact dimension.

AAC-4	
Design Weight ⁽²⁾	37.42 lb/ft ³
Minimum Compressive Strength	580 lb/in ²
AAC-6	
Design Weight ⁽²⁾	44.95 lb/ft ³
Minimum Compressive Strength	870 lb/in ²



Installation Detail



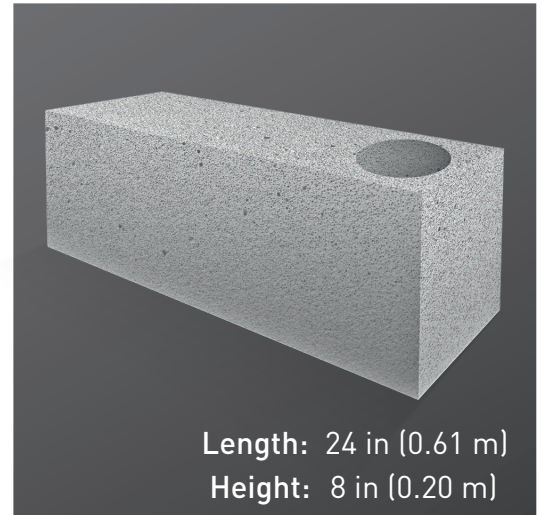
Contact us for more information:

Litecrete, Inc.
 (210)402-3223 / 1 877 41 HEBEL (1 877 41 43235)
 hebel-usa@hebel.mx
 www.hebel-usa.com

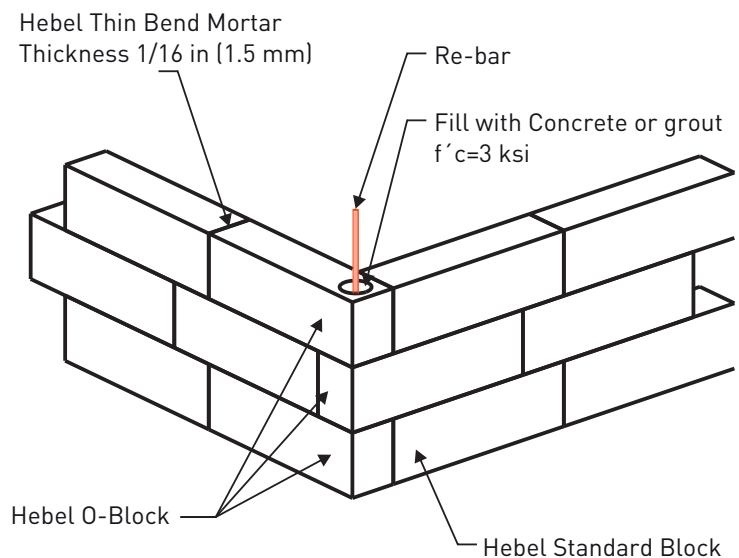
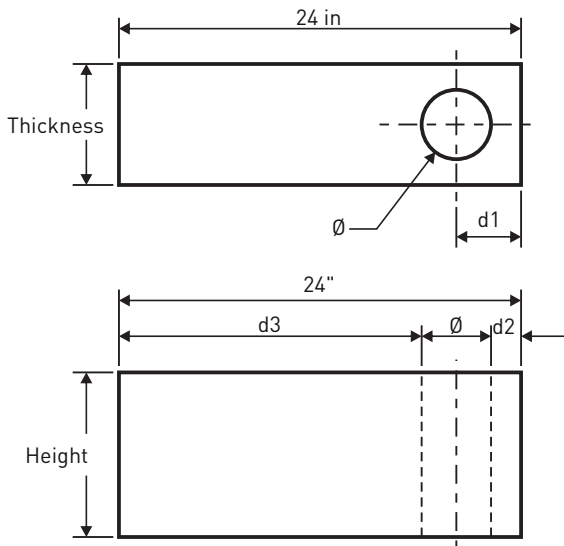
Information

Thickness		Design Weight ⁽²⁾							Pallet	
in ⁽¹⁾	in*	AAC-4	AAC-6	Diam.(Ø)	Vol.	d ₁	d ₂	d ₃	piece	ft ²
		lb/piece		in	ft ³ /ft	in				
5	4.921	19.14	22.96	2.756	0.041	2.461	1.083	20.177	144	189.1
6	5.906	22.50	27.00	3.543	0.068	2.953	1.181	19.291	120	157.6
7	6.890	26.53	31.84	3.543	0.068	3.445	1.673	18.799	96	126.1
8	7.874	29.73	35.68	4.331	0.102	3.937	1.772	17.913	84	110.3
10	9.843	37.80	45.36	4.331	0.102	4.921	2.756	16.929	72	94.6
12	11.811	45.86	55.03	4.331	0.102	5.906	3.740	15.945	60	78.8

⁽¹⁾ Nominal dimension, ⁽²⁾ Values consider material's moisture content, *Exact dimension



Installation Detail



AAC-4	
Design Weight ⁽²⁾	37.42 lb/ft ³
Minimum Compressive Strength	580 lb/in ²
AAC-6	
Design Weight ⁽²⁾	44.95 lb/ft ³
Minimum Compressive Strength	870 lb/in ²

Contact us for more information:

Litecrete, Inc.
(210)402-3223 / 1 877 41 HEBEL (1 877 41 43235)
hebel-usa@hebel.mx
www.hebel-usa.com

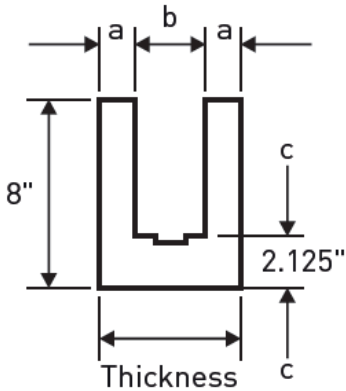
Information

Thickness		Design Weight ^[2]		Hollow ^[3]			Pallet	
		AAC-4	AAC-6	Vol.	a	b		c
in ^[1]	in*	lb/piece		ft ³ /ft	in			pcs
5	4.92	14.17	17.01	0.080	1.50	2.0	2.125	108
6	5.91	15.21	18.26	0.120	1.50	3.0	2.125	96
7	6.89	17.75	21.30	0.140	1.75	3.5	2.125	72
8	7.87	20.29	24.34	0.160	2.00	4.0	2.125	72
10	9.84	22.37	26.84	0.240	2.00	6.0	2.125	48
12	11.81	24.45	29.34	0.319	2.00	8.0	2.125	48

^[1]Nominal dimension, ^[2]Values consider material's moisture content, ^[3]Place re-bars and fill with concrete (lintel or bond beam) *Exact dimension.

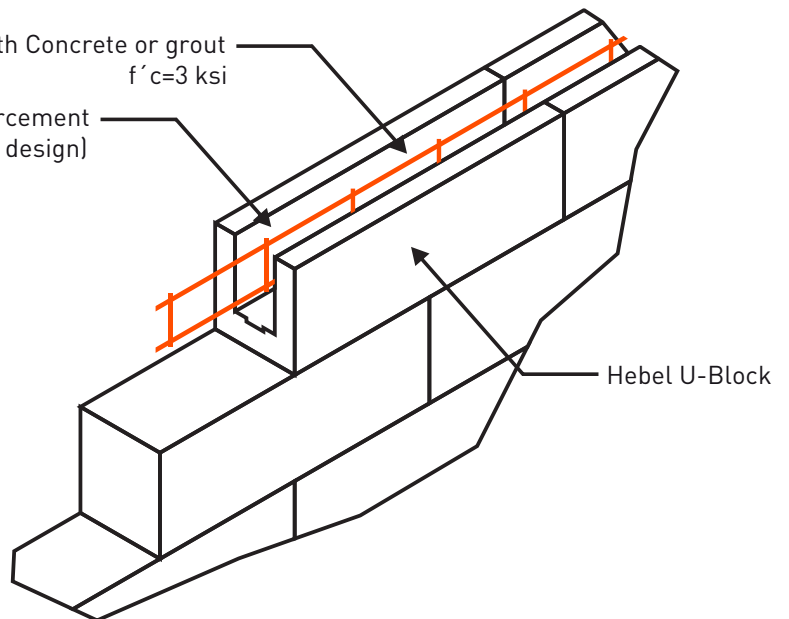


Installation Detail



Fill with Concrete or grout
 $f'c=3$ ksi

Bond beam reinforcement
(According to structural design)



AAC-4	
Design Weight ^[2]	37.42 lb/ft ³
Minimum Compressive Strength	580 lb/in ²
AAC-6	
Design Weight ^[2]	44.95 lb/ft ³
Minimum Compressive Strength	870 lb/in ²

Contact us for more information:

(210)402-3223 / 1 877 41 HEBEL (1 877 41 43235)
hebel-usa@hebel.mx
www.hebel-usa.com